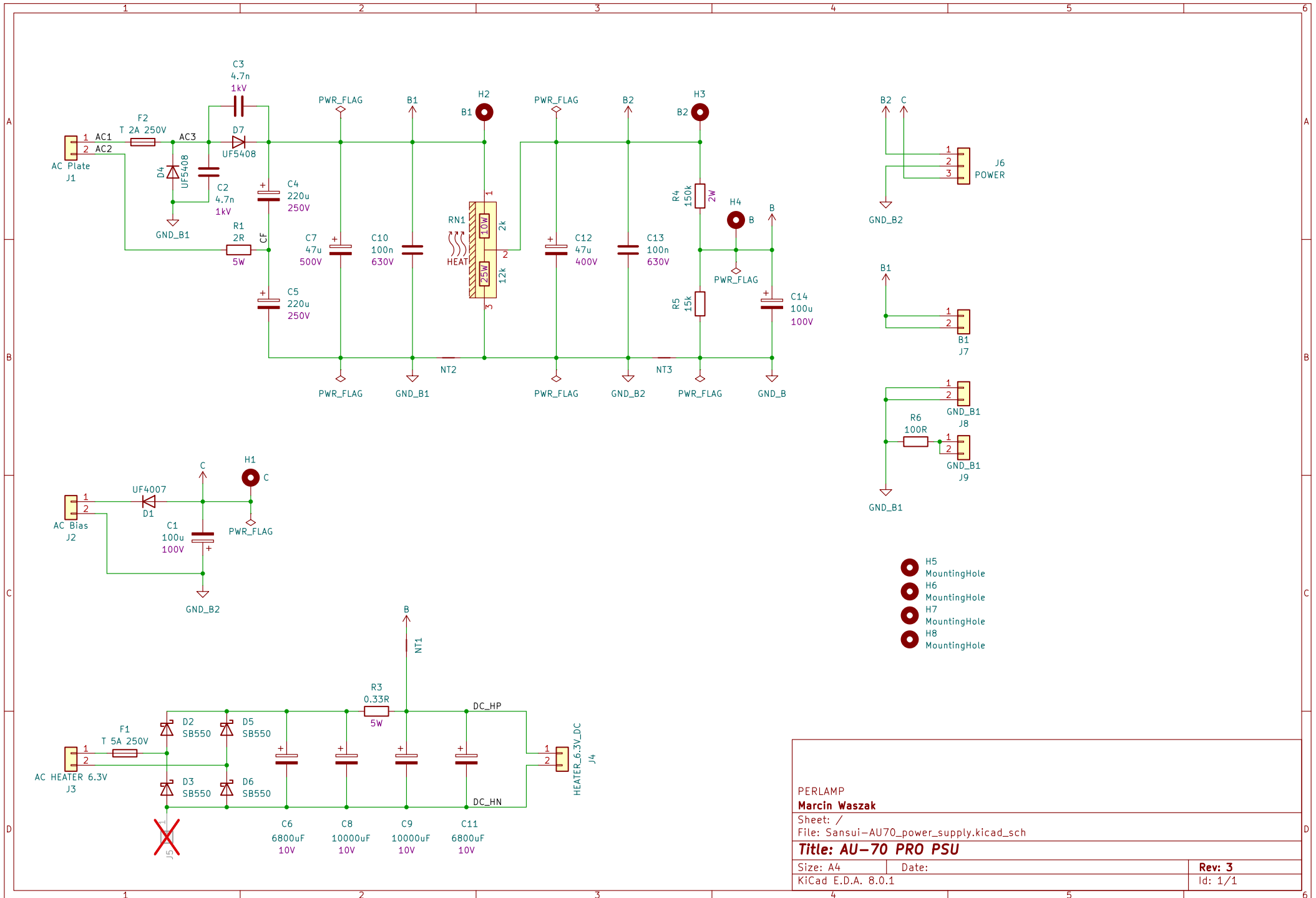


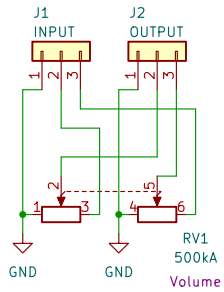
- H1 MountingHole
- H2 MountingHole
- H3 MountingHole
- H4 MountingHole
- H5 MountingHole
- H6 MountingHole
- H7 MountingHole
- H8 MountingHole
- H9 MountingHole
- H10 MountingHole
- H11 MountingHole
- H12 MountingHole
- H13 MountingHole
- H14 MountingHole
- H15 MountingHole
- H16 MountingHole



-  H5 MountingHole
-  H6 MountingHole
-  H7 MountingHole
-  H8 MountingHole

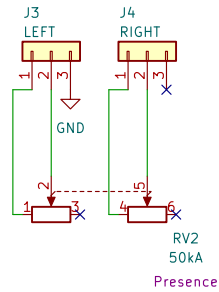
PERLAMP	
Marcin Waszak	
Sheet: /	
File: Sansui-AU70_power_supply.kicad_sch	
Title: AU-70 PRO PSU	
Size: A4	Date:
KiCad E.D.A. 8.0.1	Rev: 3
	Id: 1/1

Volume board RK271



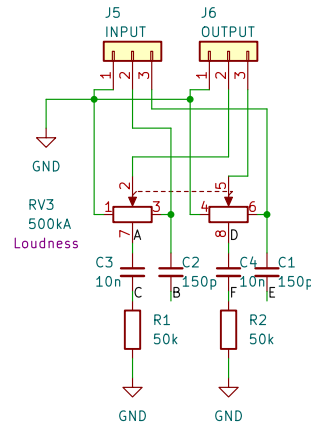
Suitable potentiometer range:
50kA to 500kA

Presence board RK271

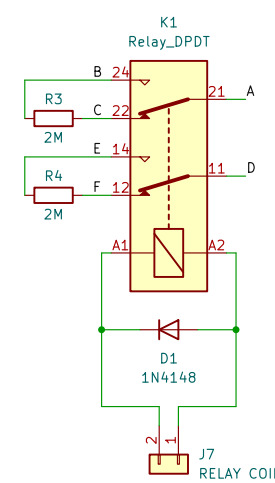


Designed for 50kA
potentiometer.

Loudness board RK271

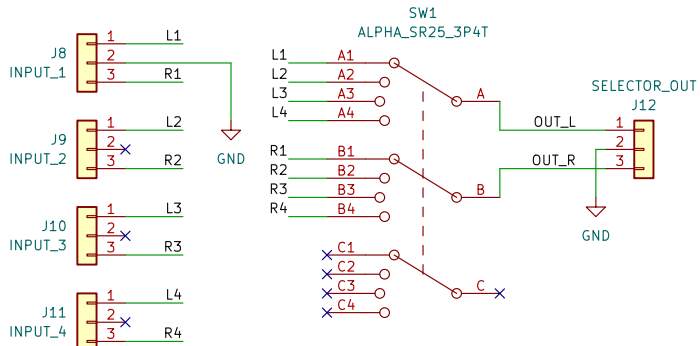


Loudness filter is deprecated. It is
recommended to use plain Volume
board instead.



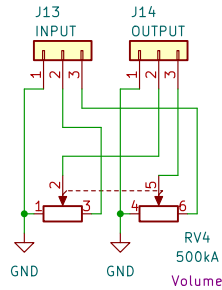
- H1 MountingHole
- H2 MountingHole
- H3 MountingHole
- H4 MountingHole

Input selector board



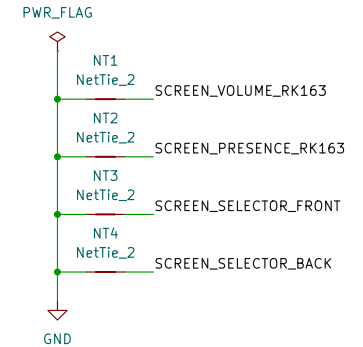
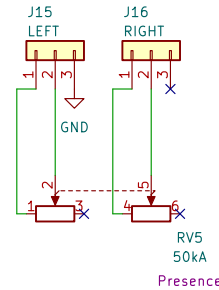
Volume board RK163

Suitable potentiometer range:
50kA to 500kA



Presence board RK163

Designed for 50kA
potentiometer.



Marcin Waszak
PERLAMP

Sheet: /
File: Sansui-AU70_potentiometer.kicad_sch

Title: Potentiometers and input selector

Size: A4
KiCad E.D.A. 8.0.1

Date:

Rev: 1

Id: 1/1